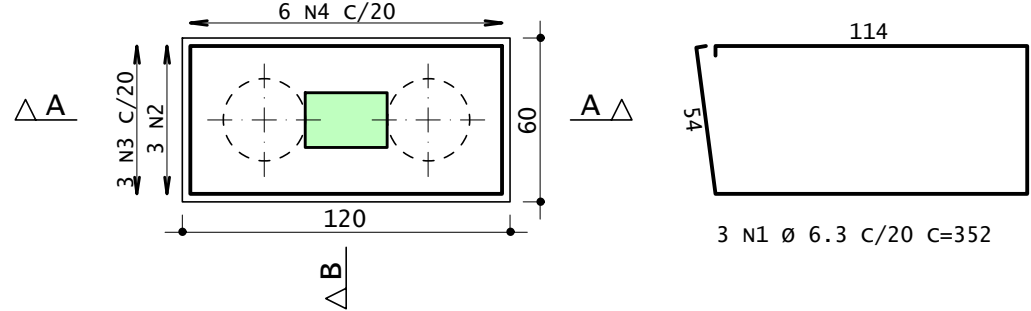
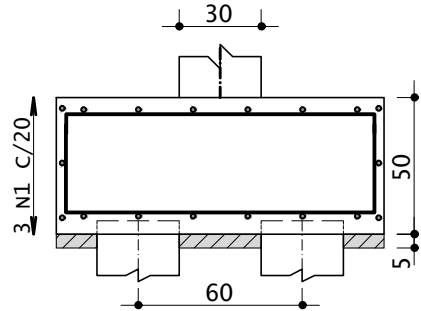


B10  
(ESCALA 1:25)

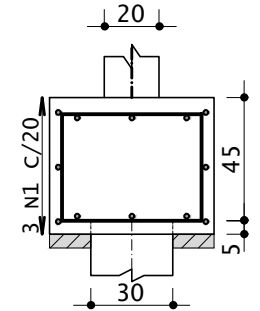
PLANTA



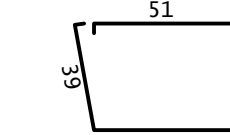
CORTE A - A



CORTE B - B



7 13 N3 Ø 6.3 C/20 C=127

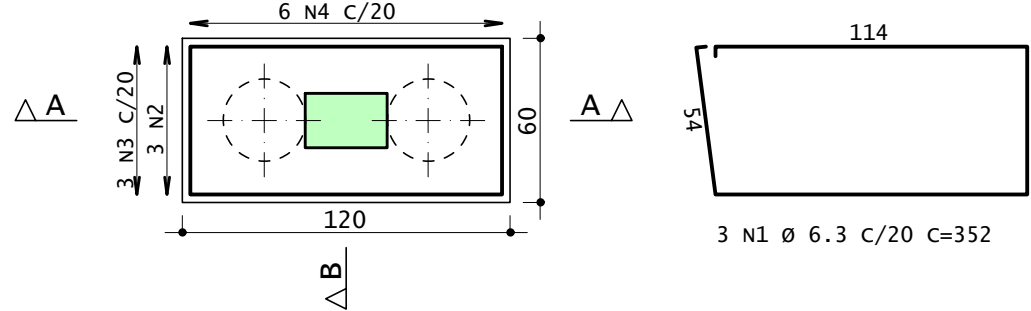


6 N4 Ø 6.3 C/20 C=196

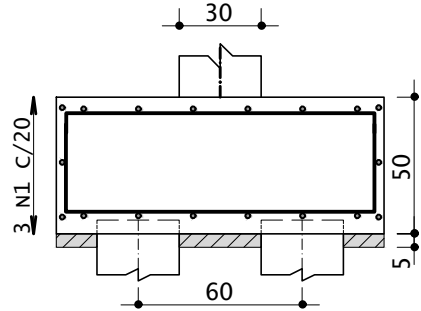
32 113 3 N2 Ø 12.5 C=177

B15  
(ESCALA 1:25)

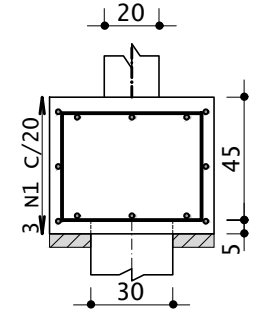
PLANTA



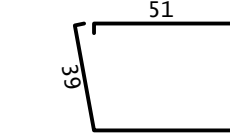
CORTE A - A



CORTE B - B



7 13 N3 Ø 6.3 C/20 C=127

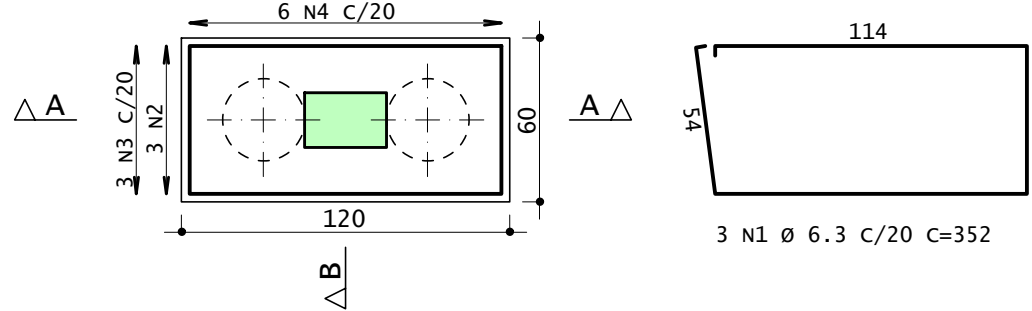


6 N4 Ø 6.3 C/20 C=196

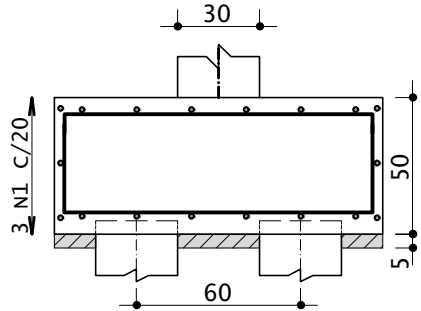
32 113 3 N2 Ø 12.5 C=177

B12  
(ESCALA 1:25)

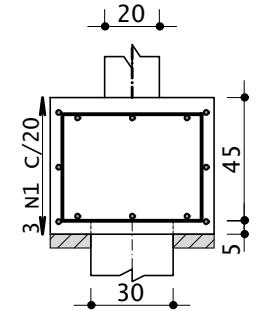
PLANTA



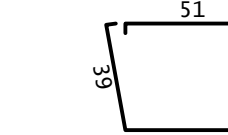
CORTE A - A



CORTE B - B



7 13 N3 Ø 6.3 C/20 C=127

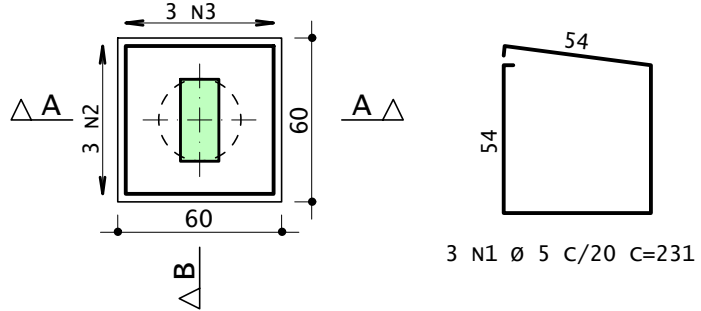


6 N4 Ø 6.3 C/20 C=196

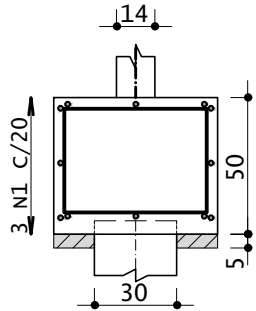
32 113 3 N2 Ø 12.5 C=177

B13  
(ESCALA 1:25)

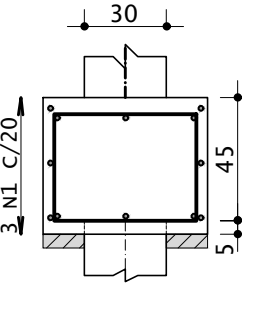
PLANTA



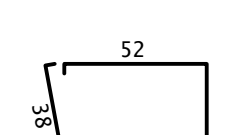
CORTE A - A



CORTE B - B



7 13 N3 Ø 6.3 C/20 C=127

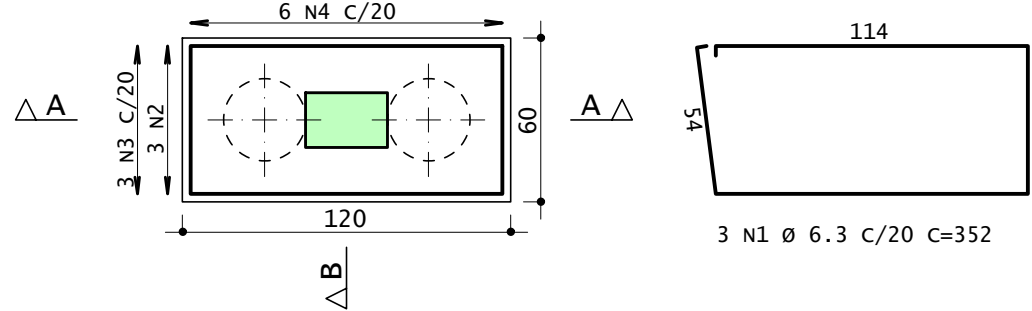


3 N2 Ø 10 C=203

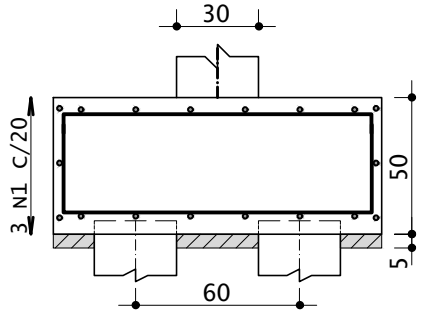
32 113 3 N2 Ø 12.5 C=177

B14  
(ESCALA 1:25)

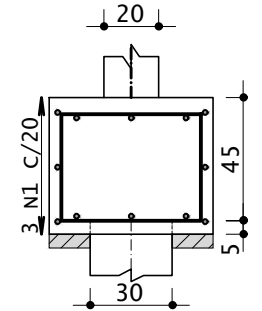
PLANTA



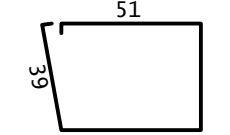
CORTE A - A



CORTE B - B



7 13 N3 Ø 6.3 C/20 C=127

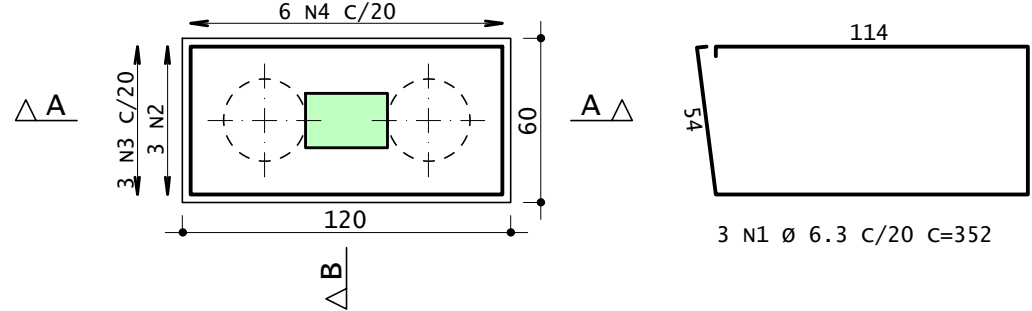


6 N4 Ø 6.3 C/20 C=196

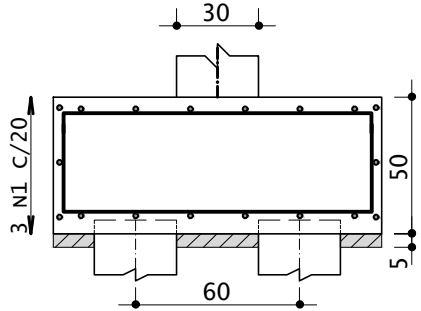
32 113 3 N2 Ø 12.5 C=177

B18  
(ESCALA 1:25)

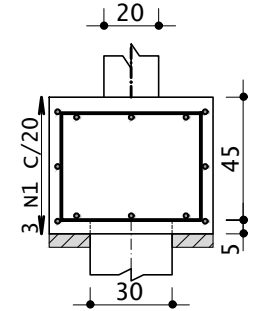
PLANTA



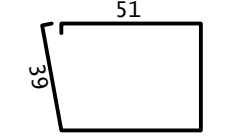
CORTE A - A



CORTE B - B



7 13 N3 Ø 6.3 C/20 C=127



6 N4 Ø 6.3 C/20 C=196

32 113 3 N2 Ø 12.5 C=177

AÇO	POS	BIT mm	QUANT	COMPRIMENTO	
				UNIT cm	TOTAL cm
B10	50A	1	6.3	3	352
	50A	2	12.5	3	177
	50A	3	6.3	3	127
	50A	4	6.3	6	196
B12	50A	1	6.3	3	352
	50A	2	12.5	3	177
	50A	3	6.3	3	127
	50A	4	6.3	6	196
B13	60A	1	5	3	231
	50A	2	10	3	203
	50A	3	10	3	205
B14	50A	1	6.3	3	352
	50A	2	12.5	3	177
	50A	3	6.3	3	127
	50A	4	6.3	6	196
B15	50A	1	6.3	3	352
	50A	2	12.5	3	177
	50A	3	6.3	3	127
	50A	4	6.3	6	196
B16	50A	1	6.3	3	352
	50A	2	12.5	3	177
	50A	3	6.3	3	127
	50A	4	6.3	6	196
B17	50A	1	6.3	3	352
	50A	2	12.5	3	177
	50A	3	6.3	3	127
	50A	4	6.3	6	196
B18	50A	1	6.3	3	352
	50A	2	12.5	3	177
	50A	3	6.3	3	127
	50A	4	6.3	6	196

RESUMO DE AÇO			
AÇO	BIT mm	COMPR m	PESO kgf
60A	5	7	1
50A	6.3	183	45
50A	10	12	8
50A	12.5	37	36
ØØAço=Total			1 kgf
ØØAço=Total			88 kgf

CARIMBO DE APROVAÇÕES :



TIPO DE USO :  
CENTRO COMUNITÁRIO - PIRES BELO

ARQUITETURA

ENDEREÇO DA OBRA :  
DISTRITO DE PIRES BELO

PROPRIETÁRIO :

FUNDO MUNICIPAL DE SAÚDE

CNPJ/CPF nº. 03532661/0001-56

AUTOR DO PROJETO :  
  
LEONARDO MARTINS DE CASTRO TEIXEIRA

CREA nº. 7455/D-GO

RESPONSÁVEL TÉCNICO :  
  
LEONARDO MARTINS DE CASTRO TEIXEIRA

CREA nº. 7455/D-GO

DESCRIÇÃO :

ÁREAS :

02  
/ 03

ESCALA :  
Indicadas

DATA :  
junho/2023

DESENHO :  
Murilo

REVISÃO :